



# Molecular epidemiological survey of pathogenic trypanosomes in naturally infected cattle in northern Côte d'Ivoire



Jean-Yves Ekra<sup>1,2,\*</sup> , Edouard K. N'Goran<sup>3</sup> , Leonard E.G. Mboera<sup>2</sup> , Biégo Guillaume Gragnon<sup>4</sup>,  
Koco Rita Nadège Assovié<sup>5</sup> , Eliakunda Michael Mafie<sup>1</sup>

<sup>1</sup>Department of Microbiology, Parasitology and Biotechnology, College of Veterinary Medicine and Biomedical Sciences, Sokoine University of Agriculture, P.O. Box 3019, Morogoro, Tanzania; <sup>2</sup>SACIDS Africa Centre of Excellence for Infectious Diseases of Humans and Animals, Sokoine University of Agriculture, P.O. Box 3297, Morogoro, Tanzania; <sup>3</sup>Unité de Formation et de Recherche (UFR) des Sciences Biologiques, Département de Biochimie-Génétique, Université Peleforo Gon Coulibaly BP1328 Korhogo, Côte d'Ivoire; <sup>4</sup>Laboratoire National d'Appui au Développement Agricole (LANADA), BP1328 Korhogo, Côte d'Ivoire; <sup>5</sup>Centre d'Entomologie Médicale et Vétérinaire (CEMV), BPV 18 BOUAKE, Côte d'Ivoire

## Abstract

Received: 21 December 2022  
Accepted: 3 April 2023

\*Correspondence  
(ekrajeanyves@gmail.com)

### Citation

Ekra JY, N'Goran EK, Mboera LEG, Gragnon BG, Assovié KRN, Mafie EM. Molecular epidemiological survey of pathogenic trypanosomes in naturally infected cattle in northern Côte d'Ivoire. Parasites Hosts Dis 2023;61(2):127-137.

Bovine trypanosomiasis is a significant health concern for livestock intensification in Côte d'Ivoire. This study aimed to determine the prevalence and distribution of pathogenic trypanosomes and identify the most infected cattle breed in northern Côte d'Ivoire. We examined 700 cattle and found that polymerase chain reaction (PCR) was more sensitive (12.3%) than microscopic observation (5.6%). Among the trypanosome species detected in naturally infected cattle, *Trypanosoma vivax* was 7.3%, *Trypanosoma simiae tsavo* was 6.7%, and *Trypanosoma congolense* was 0.4%. The overall prevalence of trypanosome infection in all cattle breeds was 12.3%, while the prevalence in individual breeds was 14.8%, 7.3%, 10.6%, and 12.3% for N'Dama, Baoule, Zebu, and Mere breed, respectively. The infected animals had low packed cell volume, influencing the prevalence. Our findings indicate that bovine trypanosomes are prevalent in Côte d'Ivoire, and their prevalence varies by region and breed. These pathogens include *T. vivax*, *T. simiae tsavo*, and *T. congolense*.

**Keywords:** Trypanosomiasis, prevalence, cattle, Côte d'Ivoire

## Introduction

Trypanosomiasis is a significant constraint to livestock development in sub-Saharan Africa [1]. Organisms belonging to the genus *Trypanosoma*, which are transmitted mainly by the tsetse fly, cause this disease. Tsetse flies have an area of distribution of over 10 million square kilometers in Africa, representing 38 countries [2]. The tsetse flies mainly transfer the trypanosomes from one animal to another. Trypanosome infections have a significant socio-economic impact and limit animal productivity in all African countries, including Côte d'Ivoire [3]. Nevertheless, its epidemiology is still unclear, unlike Human African Trypanosomiasis, whose epidemiology has been elucidated through advanced research. Although Côte d'Ivoire has mostly eliminated Human African Trypanosomiasis as a public health problem [4,5], evolving toward zero transmission, the epidemiology of animal trypanosomiasis is unclear in this country. The productivity losses due to African Animal Trypanosomiasis are approximately 30% [6]. Surveys conducted by Camus in 1979, Bokar in 1997, Acapovi in 2009, and Yao in 2015 have shown that the disease is most prevalent in the live-

© 2023 The Korean Society for Parasitology and Tropical Medicine

This is an Open Access article distributed under the terms of the Creative Commons Attribution Non-Commercial License (<https://creativecommons.org/licenses/by-nc/4.0>) which permits unrestricted non-commercial use, distribution, and reproduction in any medium, provided the original work is properly cited.

**Author contributions**

Conceptualization: Ekra JY  
 Data curation: Ekra JY  
 Formal analysis: Ekra JY  
 Methodology: Ekra JY, N'Goran EK, Mafie EM  
 Project administration: Mafie EM  
 Software: Ekra JY  
 Supervision: N'Goran EK, Mboera LEG, Gagnon BG, Mafie EM  
 Validation: Mafie EM  
 Visualization: Mboera LEG, Assovié KRN

**Conflict of interest**

The authors declare no conflict of interest related to this study.

**ORCID**

Jean-Yves Ekra  
 (<https://orcid.org/0000-0002-6617-3751>)  
 Edouard K. N'Goran  
 (<https://orcid.org/0000-0002-3871-4864>)  
 Leonard E.G. Mboera  
 (<https://orcid.org/0000-0001-5746-3776>)  
 Koco Rita Nadège Assovié  
 (<https://orcid.org/0009-0007-8338-655x>)  
 Eliakunda Michael Mafie  
 (<https://orcid.org/0000-0002-1416-292x>)

stock areas of northern Côte d'Ivoire, particularly, in the departments of Korhogo, Ferkes-sédougou, and Boundiali, with a prevalence rate ranging between 11% and 21% [7]. Despite the control efforts made by the state of Côte d'Ivoire, animal trypanosomiasis remains uncontrolled, especially in bovines. Some trypanosome species that are pathogenic to humans have been identified in animals in the department of Sinfra [8,9]. The vulnerability of humans and their livestock to trypanosomiasis is amplified by the insufficient information regarding the status of trypanosomiasis and inadequate vector control regimes adapted to risk areas and sustainable means of control. Therefore, understanding the status of infection is essential for the appropriate control of African trypanosomiasis.

This study aimed to understand the epidemiology of bovine trypanosomiasis, understand the distribution of trypanosome species, and identify the most infected livestock breed in Côte d'Ivoire.

**Materials and Methods****Ethics statement**

The samples were collected within the framework of epidemiological surveillance activities and supervised by the National Laboratory for Support to Agricultural Development (LANADA) after approval from the Ministry of Animal Resources Halieutics (MIRAH). Local authorities do not require an ethical statement for epidemiological surveillance efforts. Any veterinarian can draw blood from domestic animals as part of a preventative or diagnostic campaign with the farmer's consent. No samples were collected outside those required for standard screening and diagnostic procedures. After explaining and clarifying the study's goals, the farmers agreed to provide the blood samples from their animals, all of whom received free deworming medication. The wounded animals were cleaned and disinfected.

**Study area**

This study was conducted in the 'Savannah' region of northern Côte d'Ivoire, bordered by Mali and Burkina Faso, from August to November 2021 [10]. It has an area of 40,323 km<sup>2</sup> and a population of 1,388,142 inhabitants as estimated in 2012. Its climate is dry tropical, also called the Sudanese climate, which is marked by a wet season characterized by a water surplus lasting 4 to 5 months (June to September or October), alternating with a dry season lasting 7 to 8 months [11]. The dry season is marked by no rainfall, persistent cold and dry winds often laden with fine dust, known as the Harmattan, which blows from December to February. The vegetation consists of savannahs and dry forests, with residual patches representing the sacred woods of the Senoufo ethnic group. The gallery forests that border certain waterways complete these rare dense forests [12]. Overall, the vegetation of a mixture of open forest and Savannah, belonging to the sub-Sudanese domain characterized by vegetation with both herbaceous and woody strata.

**Study design, Sample Estimation, and Farm Selection Criteria**

We performed cross-sectional research to assess the prevalence of trypanosomiasis in cattle by randomly selecting animals from each location. The total number of cattle was determined based on the prevalence reported in previous studies. The formula  $N = P(1-P) * z^2 / i^2$

described by Thrusfield [13], was used with a precision of 5% and a confidence interval (CI) (standard value 1.96) to determine the sample cattle number. As shown previously, the prevalence of bovine trypanosomiasis in Côte d'Ivoire ranged between 11% and 21%. Using this formula, the number of sample cattle was estimated to be between 601 and 1,213. In practice, depending on the size of the department, sampling was conducted in 3 to 8 villages, which were selected according to the following criteria: i) the distance between the villages should be such as to cover the department and consider the cardinal points, ii) the presence of watercourses and gallery forests near the village or the cattle yard, iii) the presence of cattle in the village, iv) the accessibility to the farm, and v) the agreement of the populations to participate in the study. N: sample size ( $601 < N < 1,213$ ); P: expected disease prevalence ( $11\% < P < 21\%$ ); Z: 1.96 constant, i: half of the CI desired 0.05 ( $I = 0.025$ ).

### Blood sample collection

Before each collection, the vital signs of each animal were visually examined, such as mucosal condition, respiration, heart rate, pulse, body temperature, lymph nodes, and animal behavior (standing posture). Animals with poor vital signs were given a preference for blood sampling. After appropriate immobilization, we sampled 700 cattle twice each. The first sample was taken from the jugular vein using EDTA tubes, which were kept in cold storage until further molecular analysis. The second sampling was performed with 2 heparinized capillary tubes from the marginal ear vein after disinfecting it with 70% alcohol. One was used for microscopic examination, and the second was sealed with wax at one end to examine the PCV. In addition to the blood samples, farm and individual cattle data, such as age, breed according to the breeder, sex, and body condition score were recorded on a sample card for each herd.

### Parasitological examination

All parasitological diagnostic tests and procedures were performed as previously described [11]. Two microhematocrit capillary tubes with sealed outer ends were filled up to 3/4th with blood. One of these tubes was centrifuged at 12,000 rpm for 5 min using a hematocrit centrifuge. After centrifugation, the blood volume was measured using a hematocrit reader to assess the degree of anemia. The PCV was determined and expressed as a percentage of the total blood volume, taking values of total blood PCV [14].

The second capillary tube was used for thin blood smears. The slides were then quickly air-dried and protected from dust and insects. The smears were fixed by immersing them in methanol for 5 min and stained using a 1:10 solution of 0.4% Giemsa and distilled water for 20 min. After staining, the slides were rinsed thoroughly with tap water and dried before observation.

The trypanosomes were detected based on their morphology by observing the blood smears using a microscope (Novex Holland-B-Series) at  $100\times$  magnification. For positive cases, the morphology of the species was distinguished based on their appearance, shape, location, kinetoplast size, position and attachment of the nucleus, and flagellar length. However, this requires an experienced technician. The polymerase chain reaction (PCR) method was performed to better identify trypanosome species.

### DNA extraction and PCR amplification

DNA from the blood samples was extracted using a commercially available kit (Quick-DNA Miniprep Plus Kit; Zymo Research, Irvine, CA, USA) according to the manufacturer's instructions. The trypanosomes were identified by ITS1 PCR previously described [15]. The reaction mixture consisted of 2 µl of template, 1X of OneTaq buffer, 200 µM of each dNTP, 1 µM of each primer, and 0.5 U of OneTaq DNA polymerase (NEW ENGLAND Biolabs, Ipswich, MA, USA), adjusted at 25 µl with nuclease-free water. The cycling conditions were 94°C for 5 min; 35 cycles: 94°C for 40 sec, 58°C for 40 sec, 72°C for 90 sec; 72°C for 5 min.

We also performed nested ITS PCR described by Cox A [16] targeting the partial 18S, ITS1, 5.8S, ITS2, and partial 28S regions using 25-µl reaction mixtures. The first run reaction mixture consisted of 1X of One Taq buffer, each dNTP at 200 µM, each primer (ITS1 and ITS2) at 0.4 µM, 1.25 U of One Taq DNA polymerase (NEW ENGLAND Biolabs), and 1 µl of DNA. For the second run, the first PCR product (2 µl) was added in 23 µl of a fresh mix prepared using ITS3 and ITS4 primers. The cycling conditions of both runs were 95°C for 5 min; 35 cycles: 94°C for 1 min, 55°C for 1 min, 72°C for 120 sec; 72°C for 5 min.

To confirm the different trypanosome species, 7 species-specific primers were used. PCR was performed in a 25-µl reaction mixture with 1X of One Taq buffer, each dNTP at 200 µM, each primer at 1 µM, and 0.5 U of One Taq DNA polymerase (NEW ENGLAND Biolabs). The cycling conditions were 95°C for 3 min; 40 cycles: 95°C for 30 sec, 55°C for 30 sec, 72°C for 1 min; and 72°C for 5 min. The PCR products were electrophoresed using 1.5% agarose gels (BioTools Inc, Gunma, Japan) in (TBE) buffer and stained using Safe View (4 µl for 100 ml of TBE) before being visualized under UV light. The expected fragment sizes for individual trypanosome species are shown in Supplementary Table S1.

### Statistical analysis

The statistical analyses were done using the R 4.2.0 software. Arcgis 9.3 and Qgis 4.6 were used to generate the maps. The Chi2 test highlights the relationships between the parasitological and molecular results with the risk factors. The variables associated with the prevalence were determined by a mixed logistic regression using as a response variable the infection event defined by a Bernoulli random variable (0 = not infected and 1 = infected). The animal variable was considered as the randomization variable, and the PCV, breed, region, department, age, and sex were considered as explanatory variables. We created the following starting model:

$Logit(p) = \beta + An_i + P_j + Ra_k + Re_l + De_m + Ag_n + Se_o + \epsilon_{ijklmno}$  with

$$Logit(p) = \ln\left(\frac{p}{1-p}\right)$$

$p$ : is the probability that the animal is infected;  $An_i$  is an animal ( $i = 1, \dots, 700$ );  $P_j$  the value of the PCV ( $j = 1, \dots, 700$ );  $Ra_k$  the race of the animal ( $k = 1, \dots, 4$ );  $Re_l$  the region ( $l = 1, \dots, 3$ );  $De_m$  department ( $m = 1, \dots, 10$ );  $Ag_n$  the age of the animal ( $n = 1, \dots, 4$ );  $Se_o$  the sex of the animal ( $o = 1, 2$ ) et  $\epsilon_{ijklmno}$  Is the residual that follows the normal distribution  $N(0, \sigma^2)$ .

Using the likelihood method, the model was fitted with a log-likelihood approximation using the likelihood ratio test to study the influence of the explanatory variables. The same model was used to study the molecular and parasitological prevalence. Depending on all the explanatory variables, several models were tested. The best models were selected accord-

ing to the Akaike information criterion (AIC). Thus, for the parasitology and molecular methods, we selected the following models, respectively:

$$\text{Logit}(p) = \beta + \text{Ani} + \text{Pj} + \text{Rel} + \text{Agn} + \epsilon_{jln}$$

$$\text{Logit}(p) = \beta + \text{Ani} + \text{Pj} + \text{Rak} + \text{Rel} + \text{Agn} + \text{Seo} + \epsilon_{ijkln}$$

The mean hematocrit levels were compared by ANOVA test according to infestations with different trypanosome species.

## Results

In total, 700 animals were sampled in 79 farms in 74 villages distributed in the 10 departments of the 3 regions of the Savannah district (Supplementary Table S2).

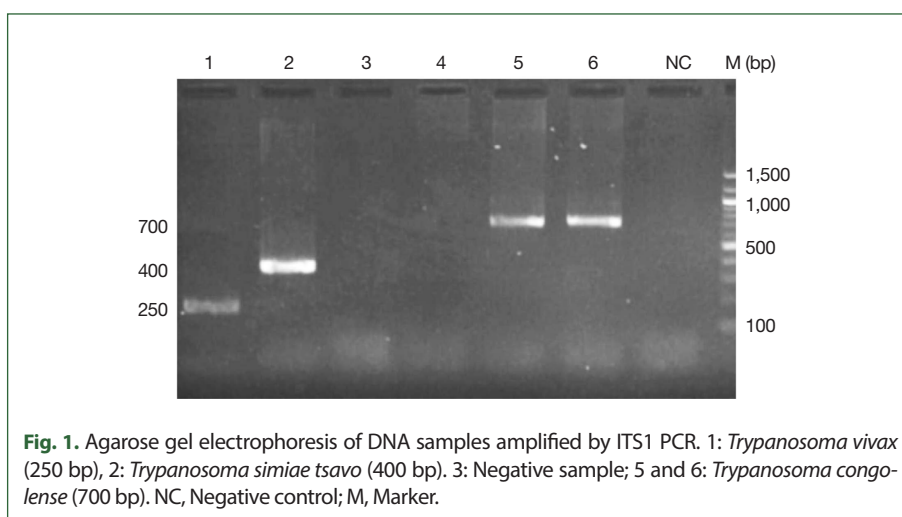
### Trypanosomes species, Abundance, and Geographical distribution

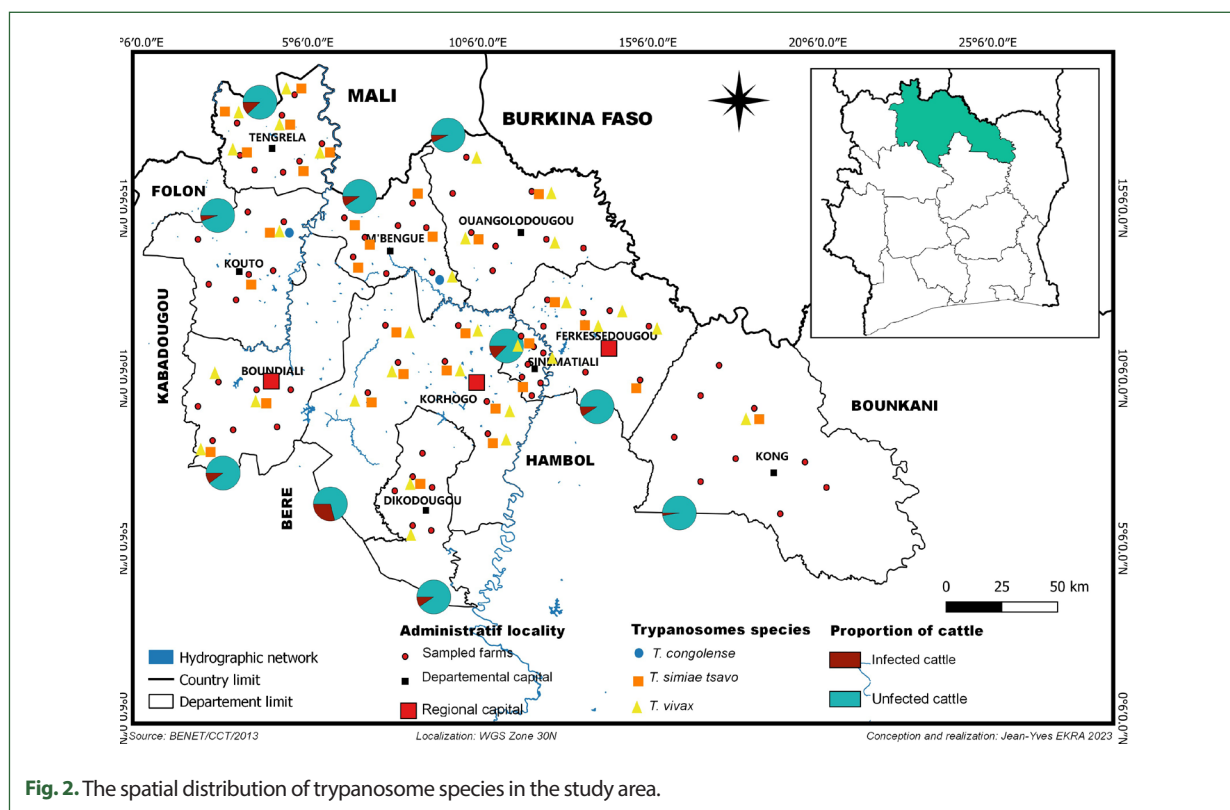
We identified 3 species of trypanosomes using classical and nested PCR, including *T. vivax*, *T. congolense*, and *T. simiae tsavo* (Fig. 1). *T. vivax* (7.28%) was the most abundant, followed by *T. simiae tsavo* (6.71%) and finally, *T. congolense* (0.42%). *T. congolense* was observed only in 2 departments, namely, M'bengue and Kouto. *T. vivax* and *T. simiae tsavo* were found in all departments of the Savannah district, as shown in the map (Fig. 2). To our knowledge, this is the first report of *T. simiae tsavo* in Côte d'Ivoire.

### Comparison between Microscopy and PCR results

Table 1 summarizes the comparison of microscopy and PCR diagnostic results. The chi-square test applied to the data showed a significant difference ( $P < 0.001$ ) between the prevalence rates obtained using microscopy and PCR.

The prevalence obtained using microscopy was 5.6% among the 700 individuals sampled. The prevalence between different regions was also statistically different, with a slight preponderance in the Poro region. The prevalence according to the modalities of the other factors was not statistically different. The prevalence obtained by PCR was 12.3%. Except for race, all other factors, such as region, department, age, and sex, were statistically differ-





**Fig. 2.** The spatial distribution of trypanosome species in the study area.

**Table 1.** Prevalence according to diagnostics methods of trypanosome infections in the study population of cattle by region, department, race, age, and sex

| Risk factors    | Sub-category   | No. examined | Microscopy technique |                |          |          | Molecular technique |                |          |          |
|-----------------|----------------|--------------|----------------------|----------------|----------|----------|---------------------|----------------|----------|----------|
|                 |                |              | Positive case        | Prevalence (%) | $\chi^2$ | <i>P</i> | Positive case       | Prevalence (%) | $\chi^2$ | <i>P</i> |
| Pororo region   | Korhogo        | 66           | 4                    | 6.1            | 13.908   | 0.1256   | 27                  | 40.9           | 62.724   | <0.0001  |
|                 | Sinématiali    | 41           | 3                    | 7.3            |          |          | 6                   | 14.6           |          |          |
|                 | Dikodougou     | 58           | 6                    | 10.3           |          |          | 6                   | 10.3           |          |          |
|                 | M'Bengué       | 69           | 7                    | 10.1           |          |          | 7                   | 10.1           |          |          |
| Tchologo region | Ferkéssédougou | 79           | 6                    | 7.6            |          |          | 8                   | 10.1           |          |          |
|                 | Kong           | 78           | 0                    | 0              |          |          | 2                   | 2.6            |          |          |
|                 | Ouangolo       | 79           | 4                    | 5.1            |          |          | 6                   | 7.6            |          |          |
| Bagoue region   | Kouto          | 70           | 3                    | 4.3            |          |          | 4                   | 5.7            |          |          |
|                 | Boundiali      | 80           | 5                    | 6.2            |          |          | 9                   | 11.2           |          |          |
|                 | Tengréla       | 80           | 1                    | 1.2            |          |          | 11                  | 13.8           |          |          |
| Race            | N'Dama         | 53           | 5                    | 9.4            | 3.3024   | 0.3473   | 11                  | 14.8           | 6.0405   | 0.1097   |
|                 | Baoulé         | 30           | 3                    | 10             |          |          | 1                   | 7.3            |          |          |
|                 | Zébu           | 104          | 4                    | 3.8            |          |          | 11                  | 10.6           |          |          |
|                 | Méré           | 513          | 27                   | 5.3            |          |          | 63                  | 12.3           |          |          |
| Age             | <2             | 116          | 8                    | 6.9            | 5.8146   | 0.121    | 11                  | 9.5            | 12.168   | <0.01    |
|                 | 2-4            | 228          | 18                   | 7.9            |          |          | 41                  | 18.0           |          |          |
|                 | 5-9            | 356          | 13                   | 3.9            |          |          | 34                  | 9.6            |          |          |
| Sex             | Female         | 538          | 28                   | 5.2            | 0.5950   | 0.4405   | 58                  | 10.8           | 4.8865   | 0.02     |
|                 | Male           | 162          | 11                   | 6.8            |          |          | 28                  | 17.3           |          |          |
|                 | Total          | 700          | 39                   | 5.6            |          |          | 86                  | 12.3           |          |          |

ent ( $P < 0.01$ ) (Table 1).

### Factors influencing the prevalence

Among the models used for microscopy-diagnosed infections, the model with PCV, region, and age as fixed effect variables (AIC = 262.18) was the best compared with the one with PCV, race, region, department, age, and sex (AIC = 266.63). Thus, this model was selected. However, among these 3 variables, only the PCV ( $P < 0.01$ ) had a significant association adjusted on the other variable (region and age) with the infection.

For molecular diagnostics, the model with packed cell volume (PCV), race, region, age, and sex (AIC = 466.98) was the best model than that one with PCV, race, region, department, age, and sex (AIC = 468.94). According to this model, it is only the region ( $P < 0.001$ ) that showed a highly significant association between animal infection with race, region, age, and sex (Table 2).

### Relation between packed cell volume, prevalence, and trypanosome species

The overall average of PCV was  $35.3\% \pm 12.53\%$ . The minimum and maximum observed were 10% and 90%, respectively. A significant difference ( $P < 0.01$ ) was observed between the PCV classes (Table 3). Animals with a PCV  $< 25$  were more prevalent than those with a

**Table 2.** Effect of risk factors on animal infection

|                    | Microscopy prevalence |        |        | Molecular prevalence |        |        |
|--------------------|-----------------------|--------|--------|----------------------|--------|--------|
|                    | odd ratio             | z      | P      | odd ratio            | z      | P      |
| Intercept          | 3.316                 | 1.004  | 0.315  | 3.316                | -1.435 | 0.151  |
| Packed cell volume | 0.950                 | -2.414 | 0.0158 | 0.950                | -0.268 | 0.788  |
| Race               | 0.965                 | -0.139 | 0.8891 | 0.965                | 1.164  | 0.244  |
| Region             | 0.669                 | -1.761 | 0.0783 | 0.669                | -3.821 | 0.0001 |
| Departement        | 0.930                 | -1.148 | 0.2509 | 0.930                | 0.203  | 0.839  |
| Age                | 0.670                 | -1.763 | 0.0779 | 0.670                | -0.563 | 0.573  |
| Sex                | 0.835                 | -0.421 | 0.6738 | 0.835                | 0.898  | 0.369  |

**Table 3.** Prevalence of Packed cell volume classes

|                       | Packed cell volume (%) |      |       |       |      |
|-----------------------|------------------------|------|-------|-------|------|
|                       | Unavailable            | < 25 | 25-29 | 30-35 | > 36 |
| No. samples           | 87                     | 78   | 85    | 197   | 253  |
| No. positives samples | 6                      | 12   | 11    | 25    | 32   |
| Prevalence            | 6.9                    | 15.4 | 12.9  | 12.7  | 12.6 |

**Table 4.** Mean packed cell volume according to trypanosome species infection

| Trypanosomes species   | No. case | PCV (Mean $\pm$ SD) | F     | P     |
|------------------------|----------|---------------------|-------|-------|
| <i>T. congolense</i>   | 3        | 28 $\pm$ 6.55       |       |       |
| <i>T. vivax</i>        | 51       | 35.83 $\pm$ 12.53   | 18.13 | <0.01 |
| <i>T. simiae tsavo</i> | 47       | 36.16 $\pm$ 9.83    |       |       |

PCV, packed cell volume.

PCV > 25.

Depending on the species of trypanosome responsible for the infection (Table 4), a significant difference ( $P < 0.05$ ) was observed between the mean PCV of the animals. The mean PCV of the cattle infected with *T. congolense* ( $28 \pm 6.55$ ) was significantly lower ( $P < 0.05$ ) than that of the animals infected with *T. vivax* ( $35.83 \pm 12.53$ ) and *T. simiae tsavo* ( $36.16 \pm 9.83$ ).

## Discussion

Our results show that *T. vivax* was the predominant species responsible for bovine trypanosomiasis in the Savannah district, consistent with previous reports [1,2]. The predominance of *T. vivax* could be explained by the agroclimatic conditions that favor the development of some riverine tsetse flies (*G. tachinoides* and *G. palpalis gambiensis*) and Savannah-type tsetse flies (*G. morsitans* and *submorsitans*), which are all known to be potential vectors of trypanosomes, particularly *T. vivax* [17]. Also, tabanids are found in our study area (Savannah district), which are known mechanical vectors for *T. vivax* [18].

*Trypanosoma simiae tsavo* was the second most abundant species in our study area, which can be attributed to the laboratory techniques. Microscopic examination of parasites has limited sensitivity and specificity [19] and requires highly skilled technicians to identify trypanosomes. In case of PCR, very few studies have used this technique due to its high cost and limited accessibility. Moreover, in all the studies conducted in Côte d'Ivoire using molecular tools [20], only specific primers (microsatellites) were used to diagnose trypanosomes, considering only the 3 species: *T. congolense*, *T. vivax*, and *T. brucei*. Therefore, it is possible that the *T. simiae tsavo* species exists but could not be detected due to the differences in previously used protocols and diagnostic methods, especially the non-use of multi-species primers.

In contrast to the other species, we observed a low abundance of *T. congolense*, detected in only 2 departments of our study area. This prevalence could be explained by the recent reduction in the population of *G. morsitans submorsitans* in West African areas, including Côte d'Ivoire [21]. Indeed, previous studies [22] proved the correlation between the presence of *G. morsitans submorsitans* and the transmission of *T. congolense*. The lack of contact between cattle and *G. morsitans submorsitans* could explain the difference in the prevalence between *T. congolense* and other encountered trypanosome species.

The absence of *T. brucei* could be explained by the conditions that favor trypanosomes with a short development cycle. This is because the prevention of infections has been increased due to the routine use of trypanocides by farmers, which does not favor *T. brucei* with a long development cycle. According to [23], trypanocides represent 44% of the total veterinary drug market in sub-Saharan Africa. Moreover, antiparasitic drugs, including trypanocides, are the most sold veterinary drugs in Côte d'Ivoire [24].

The PCR diagnostic technique was more sensitive and specific than the microscopy, consistent with several previous reports [3]. Although relatively sensitive, it is not possible to detect all the positive cases using microscopy [19].

The infection was observed in all age groups except animals older than 9. The infection rate in young animals under 2 years of age was low compared with the other age groups. Similar observations have been reported by [25] in the department of Korhogo in Côte



d'Ivoire. Indeed, young animals are more closely monitored for health problems. Moreover, as they are kept on the picket all day while the rest of the herd are allowed to graze, they are less in contact with the vectors of bovine trypanosomiasis. This low frequency of contact between the young animals and the vectors is advantageous for them due to less exposure to the vectors that transmit trypanosomes.

The N'Dama breed had the highest prevalence, followed by the Méré, Zebu, and Baoule breeds in decreasing order of prevalence. The local N'Dama and Baoule breeds are taurines that represent the Ivorian genetic heritage [26] and are known for their trypanotolerance. However, our results revealed that the N'Dama breed is susceptible to infections. Notably, this breed has strong genetic pressure due to uncontrolled crossbreeding by breeders. Resultantly, the breeders can no longer distinguish the population of these crosses. Hence, the products of the crosses between zebu and taurine (N'Dama, Baoule, and lagunaire cattle) are grouped under the name of Méré. This new breed is stabilizing and accounts for 80% of the cattle population in Côte d'Ivoire [27]. Notably, all projects aimed at improving cattle production in Côte d'Ivoire have used the N'Dama as a reference breed [28], making it difficult to obtain purebred trypanotolerant taurines.

Animals with trypanosome infections generally suffer from anemia. The low PCV observed in this study has also been reported previously [29]. Furthermore, using the model, this study shows that the infections diagnosed using the microscopy method and PCV are related. Indeed, the anemia or PCV percentage indicates good production performance of an infected animal. Additionally, we found that the average PCV of animals infected with *T. congolense* is low compared to that of animals infected with other trypanosome species, consistent with previous studies [30] that showed similar pathogenicity among *T. congolense* species.

Our findings indicate that bovine trypanosomiasis is prevalent in Côte d'Ivoire, varying from region to region. These pathogens include *T. vivax*, *T. simiae tsavo*, and *T. congolense*. Unlike other species, *T. congolense* was observed only in 2 departments, M'bengue and Kouto. PCR was more specific and sensitive than microscopy in diagnosing infections. The most infected breed was the N'Dama breed. PCV is a key indicator for the rapid diagnosis of trypanosomes.

## Acknowledgments

This study was funded by the Partnership for Skills in Applied Sciences, Engineering and Technology (PASET) through the Regional Scholarship and Innovation Fund (RSIF) awarded to Jean-Yves EKRA to carry out doctoral studies at SACIDS Africa Centre of Excellence for Infectious Diseases, SACIDS Foundation for One Health, Sokoine University of Agriculture, Morogoro, Tanzania. The funders had no role in study design, data collection and analysis, the decision to publish, or the preparation of the manuscript. The findings and conclusions of this study are those of the authors and do not necessarily represent the views of the funders.

We acknowledge the Ministry of Animal Resources Halieutics (MIRAH) of Côte d'Ivoire for facilitating the collection of field data. We acknowledge the Professional Organization of breeders of Ferkessedougou (OPEF) and the agents of the MIRAH for guiding us in the

field. We acknowledge the breeders who participated in this study.

We acknowledge the institute Pierre Richet (IPR) of Bouake (Côte d'Ivoire), where the molecular work was conducted. We acknowledge the assistance of the staff at SUA and Southern Africa Centre of Excellence for Infectious Diseases, the SACIDS Foundation for One Health, SUA, Morogoro, Tanzania.

## References

1. Yao LS, Gragnon BG, Dri KLN, Coulibaly B, Komono D. Prévalence trypanosomienne dans le bassin cotonnier en zone soudanaise de Côte d'Ivoire. *Rev Mar Sci Agron Vét* 2020;8:417-424 (in French).
2. Acapovi-Yao G, Desquesnes M, Hamadou S, N'Goran E. Prévalence parasitologique et sérologique des trypanosomoses chez trois races bovines en zones à glossines et présumée indemne, Côte d'Ivoire. *Agron Africaine* 2010;21(2): 205-213 (in French).
3. Kizza D, Ocaido M, Mugisha A, Azuba R, Nalule S, et al. Prevalence and risk factors for trypanosome infection in cattle from communities surrounding the Murchison Falls National Park, Uganda. *Parasit Vectors* 2021;14(1):1-7. <https://doi.org/10.1186/s13071-021-04987-w>
4. Koné M, Kaba D, Kaboré J, Thomas LF, Falzon LC, et al. Passive surveillance of human african trypanosomiasis in côte d'ivoire: Understanding prevalence, clinical symptoms and signs, and diagnostic test characteristics. *PLoS Negl Trop Dis* 2021;15(8):1-19. <https://doi.org/10.1371/journal.pntd.0009656>
5. Franco R, Cecchi G, Priotto G, Paone M, Diarra A, et al. Monitoring the elimination of human African trypanosomiasis at continental and country level: Update to 2018. *PLoS Negl Trop Dis* 2020;21;14(5):e0008261. <https://doi.org/10.1371/journal.pntd.0008261>
6. Douati A, Kupper W, Kotia K, Badou K. Contrôle des glossines (Glassina: Diptera, Muscidae) à l'aide d'écrans et de pièges (méthodes statiques): bilan de deux années de lutte à Sikasso dans nord de la Côte- d'Ivoire. *Rev Elev Med Vet Pays Trop* 1986; 39(2):213-219 (in French).
7. Acapovi-Yao G, Cisse B, Koumba CRZ, Mavoungou JF. Infections trypanosomiennes chez les bovins dans des élevages de différents départements en Côte d'Ivoire. *Rev Med Vet (Toulouse)* 2016;167(9-10):289-295 (in French).
8. Jamonneau V, Barnabé C, Koffi M, Sané B, Cuny G, Solano P. Identification of *Trypanosoma brucei* circulating in a sleeping sickness focus in Côte d'Ivoire: assessment of genotype selection by the isolation method. *Infect Genet Evol* 2003;3(2):143-149. [https://doi.org/10.1016/s1567-1348\(03\)00069-8](https://doi.org/10.1016/s1567-1348(03)00069-8)
9. Traoré BM, Koffi M, N'djetchi MK, Kaba D, Kaboré J, et al. Free-ranging pigs identified as a multi-reservoir of *Trypanosoma brucei* and *Trypanosoma congolense* in the Vavoua area, a historical sleeping sickness focus of Côte d'Ivoire. *PLoS Negl Trop Dis* 2021;15(12):1-19. <https://doi.org/10.1371/journal.pntd.0010036>
10. Aubertin C. Histoire et création d'une région "sous-développée" (le Nord ivoirien). *Cah ORSTOM* 1983;19(1):23-57.
11. Avenard JM. Le milieu naturel de la Côte-d'Ivoire. *Etud Rurales* 1972;48(1):185-186.
12. Eldin M. Le climat en Cote d'Ivoire. *Orstom* 1971;107(2):78-108.
13. Thrusfield M, Ortega C, de Blas I, Noordhuizen JP, Frankena K. WIN EPISCOPE 2.0: improved epidemiological software for veterinary medicine. *Vet Rec* 2001;148(18):567-572. <https://doi.org/10.1136/vr.148.18.567>
14. Radostits O, Gay C, Hinchcliff K, Constable P. Veterinary Medicine: a Textbook of the Diseases of Cattle, Horses, Sheep, Pigs and Goats. Saunders-Elsevier. Edinburgh, Scotland. 2007.
15. Njiru ZK, Constantine CC, Guya S, Crowther J, Kiragu JM, et al. The use of ITS1 rDNA PCR in detecting pathogenic African trypanosomes. *Parasitol Res* 2005;95(3):186-192. <https://doi.org/10.1007/s00436-004-1267-5>
16. Cox A, Tilley A, Mcodimba F, Fyfe J, Eisler M, et al. A PCR based assay for detection and differentiation of African trypanosome species in blood. *Exp Parasitol* 2005;111(1):24-29. <https://doi.org/10.1016/j.exppara.2005.03.014>
17. Ouédraogo-Sanon G. Thèse Mme OUEDRAOGO SANON Gisèle Version final 27 08 2020. Université Joseph Ki-Zerbo; 2020 (in French). Available from: <https://www.researchgate.net/publication/344434317>
18. Acapovi-Yao G, Mavoungou J, Kohagne L, Ta DTB. Dynamique et dispersion spatiale des Tabanidae dans différents faciès écologiques de Korhogo en Côte d'Ivoire. *Entomol Faun-Faun Entomol* 2017;70:13-22 (in French). <https://doi.org/10.25518/2030-6318.3584>
19. Desquesnes M. OIE Reference Laboratory for Animal Trypanosomoses of African origin Compendium of Standard Diagnostic Protocols for Animal Trypanosomoses of African Origin. 2017, pp 1-106. Available from: [http://www.oie.int/nttat/Attached files/A16-REC-COMPENDIUM\\_PROTOCOLES\\_TRYPANO-En.pdf](http://www.oie.int/nttat/Attached%20files/A16-REC-COMPENDIUM_PROTOCOLES_TRYPANO-En.pdf)
20. Djohan V, Kaba D, Rayaissé JB, Salou E, Coulibaly B, et al. Diversité spatio-temporelle des glossines le long du fleuve Comoé en Côte d'Ivoire. *Rev d'élevage médecine vétérinaire des pays Trop* 2015;68(1):39.
21. Djohan V, Kaba D, Rayaissé JB, Dayo GK, Coulibaly B, et al. Detection and identification of pathogenic trypanosome spe-

- cies in tsetse flies along the Comoé River in Côte d'Ivoire. *Parasite* 2015;22:18. <https://doi.org/10.1051/parasite/2015018>
22. Isaac C, Ciosi M, Hamilton A, Scullion KM, Dede P, et al. Molecular identification of different trypanosome species and subspecies in tsetse flies of northern Nigeria. *Parasit Vectors* 2016; 9(1):1-7. <https://doi.org/10.1186/s13071-016-1585-3>
  23. Tekle T, Terefe G, Cherenet T, Ashenafi H, Akoda KG, et al. Aberrant use and poor quality of trypanocides: A risk for drug resistance in south western Ethiopia. *BMC Vet Res* 2018;14(1): 4. <https://doi.org/10.1186/s12917-017-1327-6>
  24. Yapo EM. Analyse économique de la filière du médicament vétérinaire en Côte d'Ivoire. Université Cheikh Anta Diop De Dakar; 2011;130 (in French). Available from: <https://beep.ird.fr/collect/eismv/index/assoc/TD11-17.dir/TD11-17.pdf>
  25. Boka OM, Boka EEJ, Yapi GY, Traoré SI, Kouamé KE. Epidémiologie de la trypanosomose animale africaine chez les bovins dans le département du Korhogo (Côte d'Ivoire). *Rev d'élevage médecine vétérinaire des pays Trop* 2019;72(2):83 (in French). <https://doi.org/10.19182/remvt.31748>
  26. Yapi-Gnaore, Oya BA, Zana O. Revue de la situation des races d' animaux domestiques De Cote d' Ivoire. *Anim Genet Resour génétiques Anim généticos Anim* 1996;19:91-108 (in French). <https://doi.org/10.1017/S101423390000081X>
  27. Sokouri DP, Loukou NE, Yapi-Gnaoré CV, Mondeil F, Gngangbé F. Caractérisation phénotypique des bovins à viande (*Bos taurus* et *Bos indicus*) au centre (Bouaké) et au nord (Korhogo) de la Côte d'Ivoire. *Anim Genet Resour Inf* 2007;40:43-53 (in French). <https://doi.org/10.1017/S1014233900002182>
  28. Goran EKN, Sokouri DP, Gnaore VCY, Fantodji AT. Croisement de la race n' dama avec les races abondance et montbéliarde en zone tropicale humide de côte divoire : caractérisation phénotypique et analyse comparative des croisés pour leurs performances laitières en ferme. *Agronomie Africaine* 2015;27(1):15-26 (in French).
  29. Dwinger RH, Clifford DJ, Agyemang K, Gettinby G, Grieve AS, et al. Comparative studies on N'Dama and zebu cattle following repeated infections with *Trypanosoma congolense*. *Res Vet Sci* 1992;52(3):292-298. [https://doi.org/10.1016/0034-5288\(92\)90027-y](https://doi.org/10.1016/0034-5288(92)90027-y)
  30. Dayo G, Bengaly Z, Messad S, Bucheton B, Sidibe I, et al. Prevalence and incidence of bovine trypanosomosis in an agro-pastoral area of southwestern Burkina Faso. *Res Vet Sci* 2010;88: 470-477. <https://doi.org/10.1016/j.rvsc.2009.10.010>

**Supplementary Table S1.** Trypanosomes band sizes expected and primers sequences

| PCR DNA sequence target  | Primer sequence (5'-3')                        | Trypanosomes species and band sizes  | References |
|--|--|--|------------|
| <b>Mono-specific primer</b>  |  |  |            |
| Specific PCR target Microsatellite   | TVW 1: CTGAGTGCTCCATGTGCCAC                    | <i>T.vi</i> (150 bp)   | [19]       |
|  | TVW 2: CCACCAGAACACCAACCTGA                    |  |            |
|  | TBR1: 5' CGAATGAATATTAACAATGCGCAG 3'           | <i>T.br</i> (173 bp)   | [19]       |
|  | TBR2: 5' AGAACCATTATTAGCTTTGTTGC 3'            |  |            |
|  | TCS1: 5' CGAGCGAGAACGGGCAC 3'                  | <i>T.cs</i> (321 bp)   | [19]       |
|  | TCS2: 5' GGGACAAACAAATCCCGC 3'                 |  |            |
|  | TCF1: 5' GGACACGCCAGAAGGTACTT 3'               | <i>T.cf</i> (350 bp)   | [19]       |
|  | TCF2: 5' GTTCTCGCACCAATCCAAC 3'                |  |            |
|  | TSM1: 5'CCGGTCAAAAACGCATT3'                    | <i>T.s</i> (437 bp)  | [19]       |
|  | TSM2: 5'AGTCGCCCCGGAGTCGAT3'                   |  |            |
|  | TST1: 5' GTCCTGCCACCAGATATGC 3'                | <i>T.s.t</i> (450 bp)  | [19]       |
|  | TST2: 5' CGAGCATGCAGGATGGCCG 3'                |  |            |
|  | TthCATL1: 5' CGTCTCGGCTCCGGTCAAAC 3'           | <i>T.th</i> (273 bp)   | [19]       |
|  | DT0155: 5' TTAAAGCTCCACGAGTTCTTGATGATCCAGTA 3' |  |            |
| <b>Multi-specific primer</b>   |  |  |            |
| ITS1 PCR, target non-coding DNA between 18S and 5.8S rDNA genes                | ITS1 CF: CCGGAAGTTCACCGATATTG                  | <i>T.vi</i> (250 bp); <i>T.br</i> (480 bp); <i>T.cs</i> (700 bp); <i>T.cf</i> (710 bp); <i>T.s</i> (400 bp); <i>T.s.t</i> (370 bp); <i>T.th</i> (273 bp)                   | [15]       |
|  | ITS1 BR: TTGCTGCGTTCTTCAACGAA                  |  |            |
| Nested ITS PCR target partial 18S, ITS1, 5.8S, ITS2 and partial 28S rDNA genes | ITS1: 5'- GATTACGTCCCTGCCATTG-3'               | <i>T.vi</i> (620 bp); <i>T.br</i> (1,215 bp); <i>T.cs</i> (1,408-1,501 bp); <i>T.cf</i> (1,408-1,501 bp); <i>T.s</i> (847 bp); <i>T.s.t</i> (951 bp); <i>T.th</i> (998 bp) | [16]       |
|  | ITS2: 5'-TTGTTTCGCTATCGGTCCTCC-3'              |  |            |
|  | ITS3: 5'-GGAAGCAAAGTCGTAACAAGG-3'              |  |            |
|  | ITS4: 5'-TGTTTTCTTTCTCCCGCTG-3'                |  |            |

*T.vi*, trypanosome vivax; *T.br*, trypanosome brucei; *T.cs*, trypanosome congolense savanha; *T.cf*, trypanosome congolense foret; *T.s*, Trypanosoma simiae; *T.s.t*, Trypanosoma simiae tsavo; *T.th*, trypanosome tehileri; PCR, polymerase chain reaction.

**Supplementary Table S2.** Summary of collected data

| Region       | Department     | No. of sample | No. of village | No. of farms |
|--------------|----------------|---------------|----------------|--------------|
| Poro         | Korhogo        | 66            | 5              | 7            |
|              | Dikodougou     | 58            | 6              | 6            |
|              | Sinématiali    | 41            | 3              | 6            |
|              | M'bengue       | 69            | 7              | 7            |
| Subtotal     | 4              | 234           | 24             | 29           |
| Tchologo     | Ferkéssédougou | 79            | 7              | 7            |
|              | Kong           | 78            | 8              | 8            |
|              | Ouangolo       | 79            | 8              | 8            |
| Subtotal     | 3              | 236           | 25             | 25           |
| Bagoué       | Kouto          | 70            | 7              | 7            |
|              | Boundiali      | 80            | 8              | 8            |
|              | Tengréla       | 80            | 8              | 8            |
| Subtotal     | 3              | 230           | 25             | 25           |
| <b>Total</b> | <b>10</b>      | <b>700</b>    | <b>74</b>      | <b>79</b>    |